

## Connection and Interface Instructions

Form:Connection and Interface Instructions:06-26

# ALTRONIC



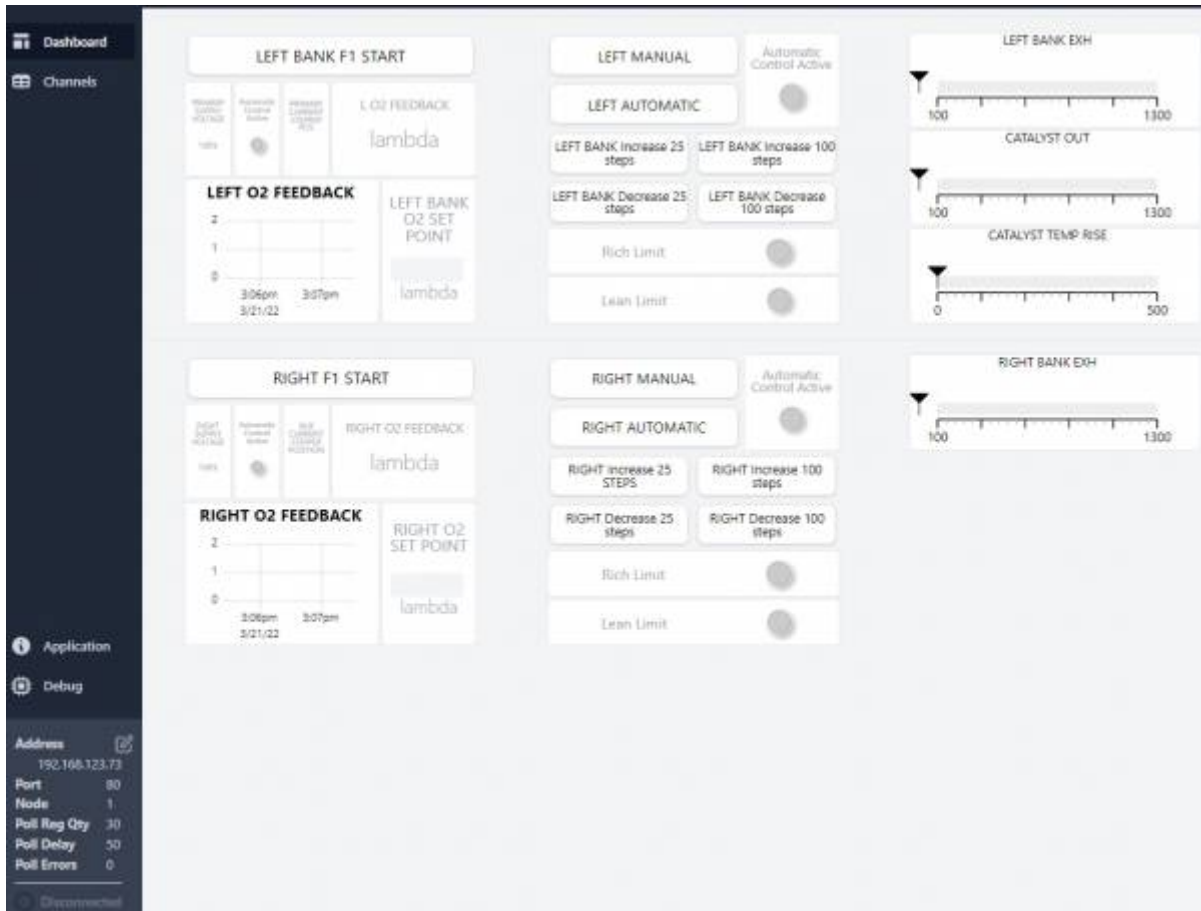


# Table of Contents

- Connection and Interface Instructions** ..... 1
- 0.1 The Edit Button ..... 9
- 0.2 The Application Tab ..... 16
- 0.3 Setting up for DE-4000 ..... 16



# Connection and Interface Instructions

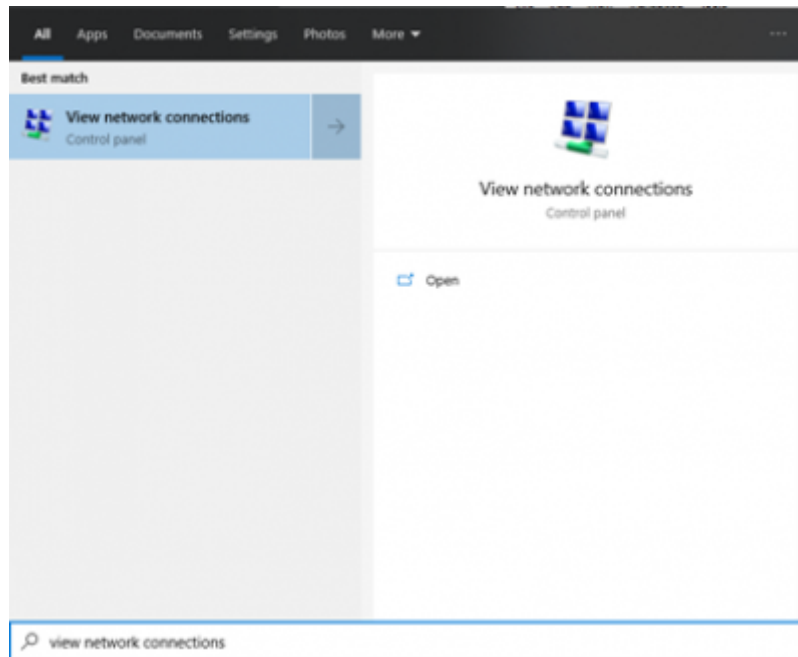


## AWI with a Computer

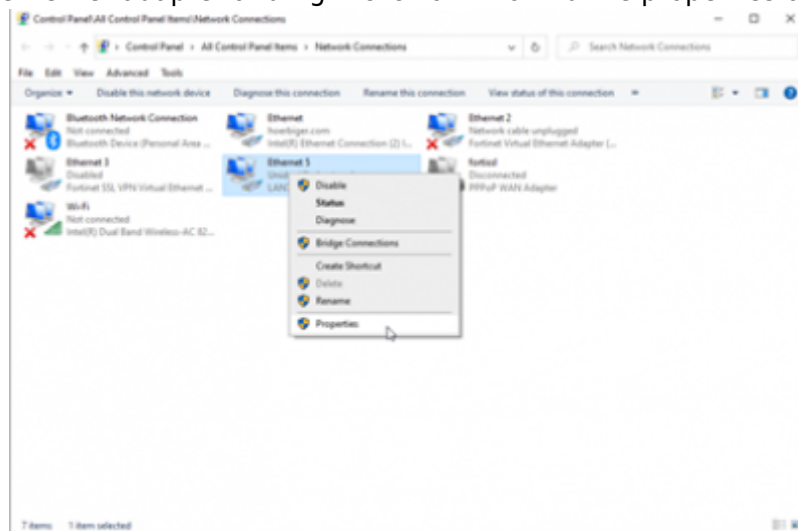
It is best to set up the network adapter or ethernet port without having the AFR-500 device connected, then plug in the ethernet cable, and lastly power up the AFR-500. Once all communications have been established with the AWI and the computer, hot swapping the ethernet and power up/down is not an issue. If all connections are performed for the first time while the AFR-500 is powered, the device will need to be power cycled once all connections and settings have been made.

In order to communicate with the device over ethernet, the IP address of our computer needs changed.

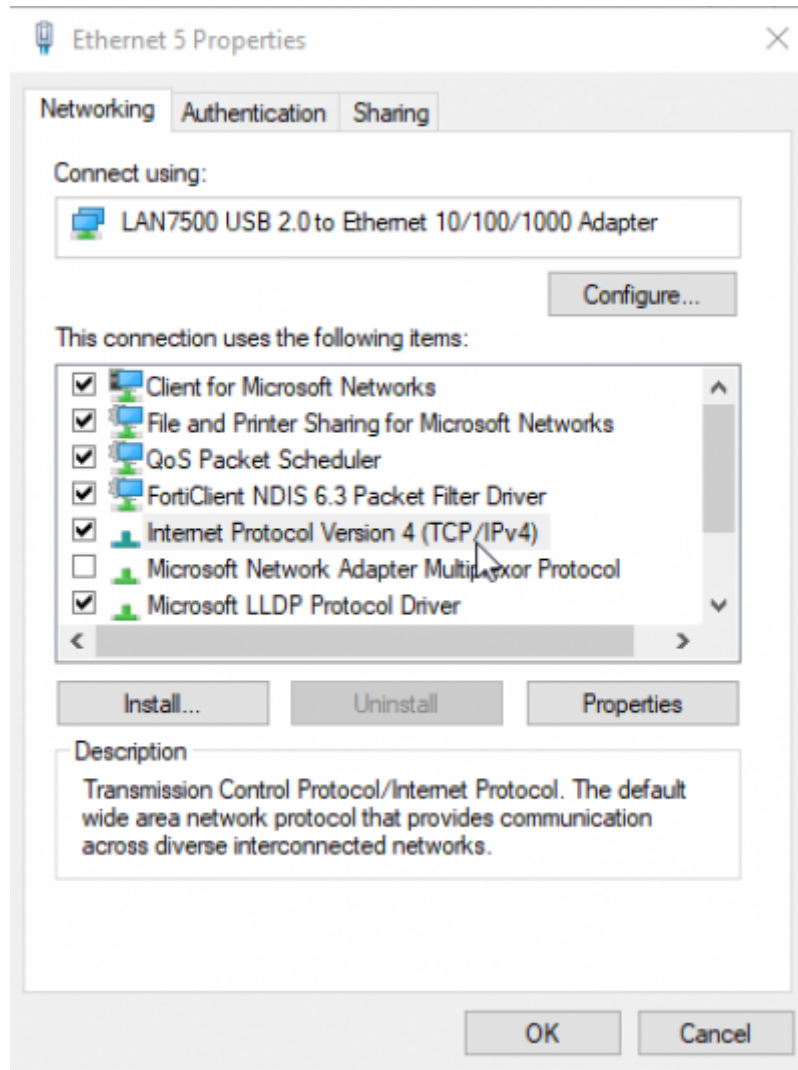
1. In windows go to the search bar and type "View Network Connections"



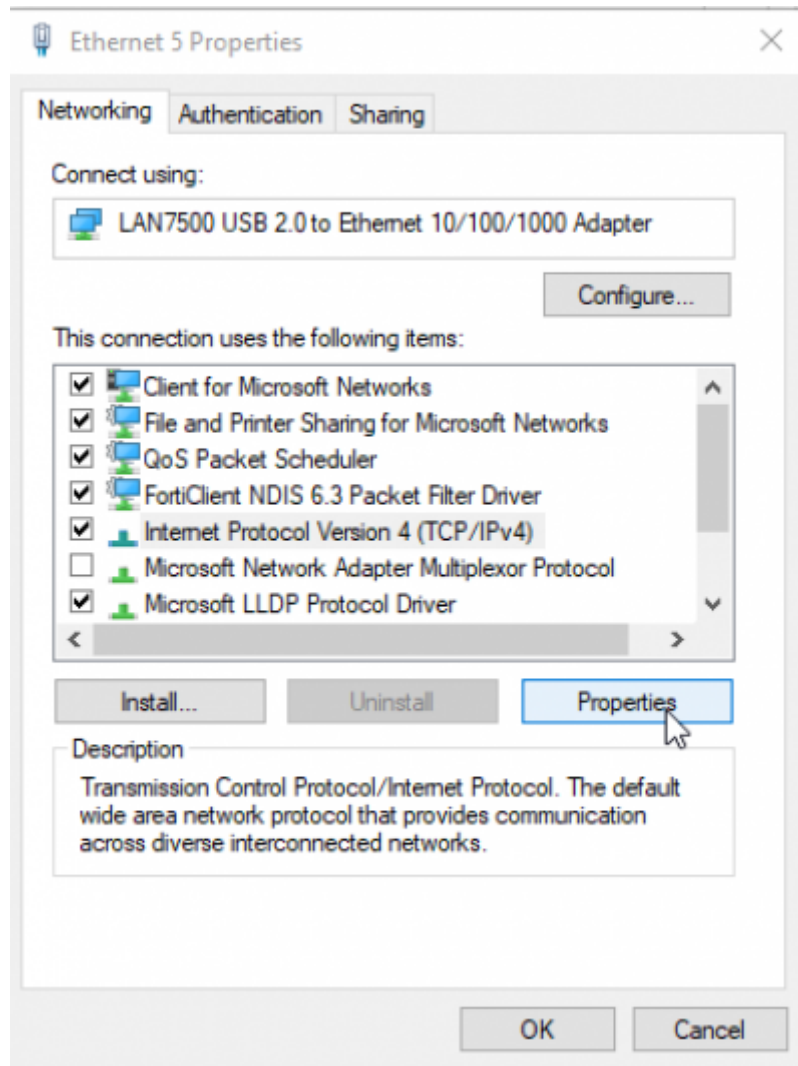
2. Find your USB to ethernet adapter and right click on it to find the properties option



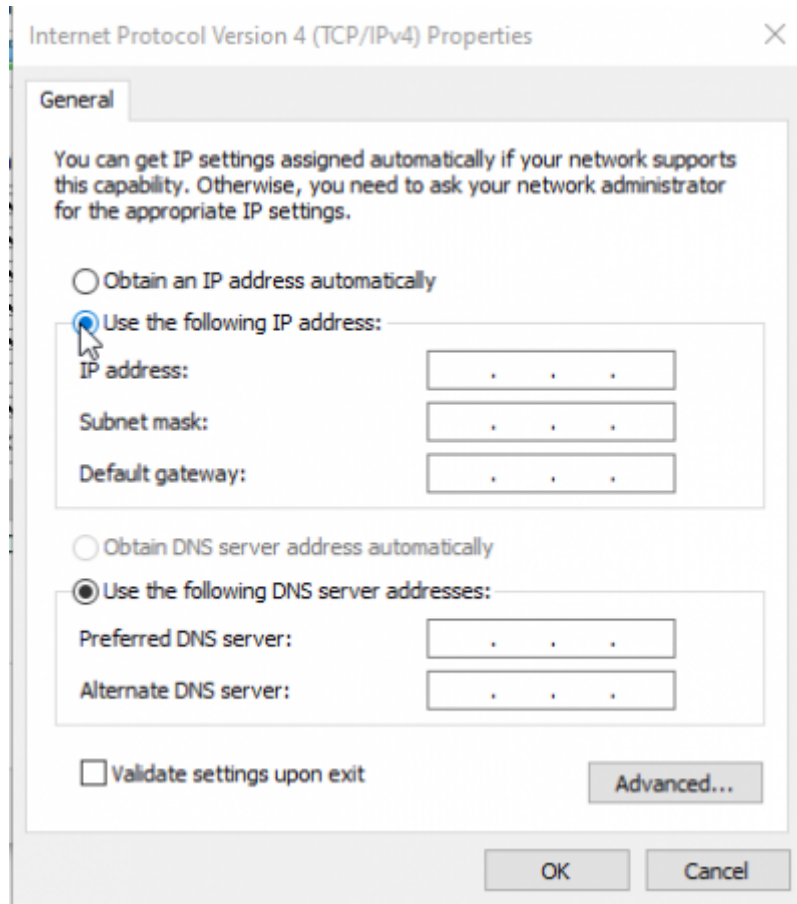
3. Under properties, select the (TCP/IPv4) option



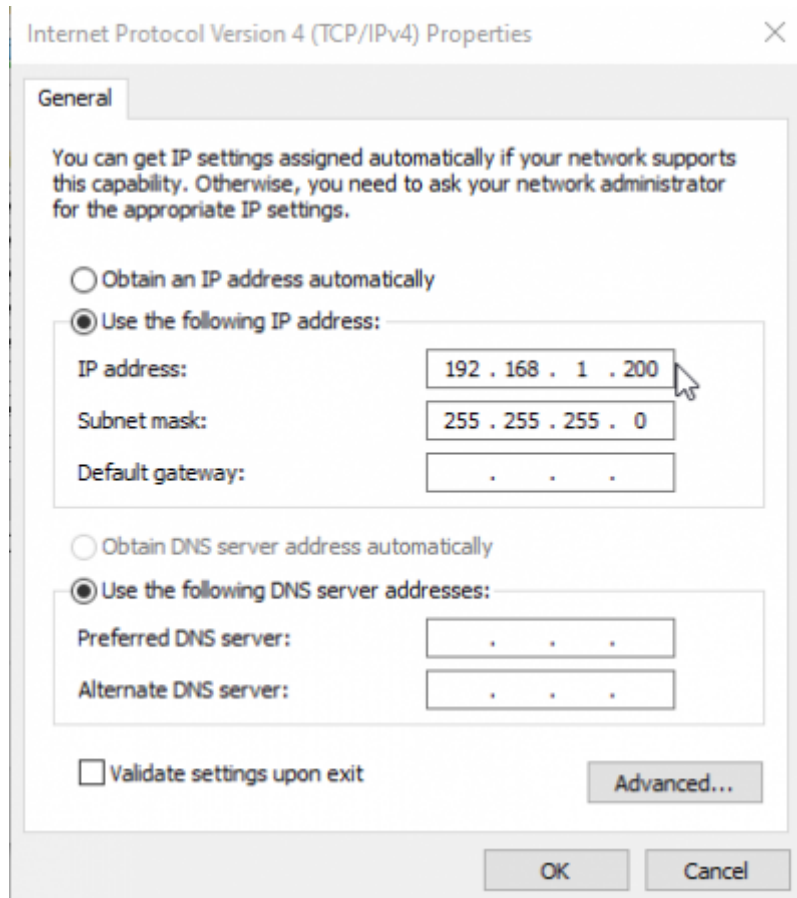
4. Select properties which allows editing of the (TCP/IPv4) option



5. Select “use the following IP address”



6. Enter in the IP address 192.168.1.200



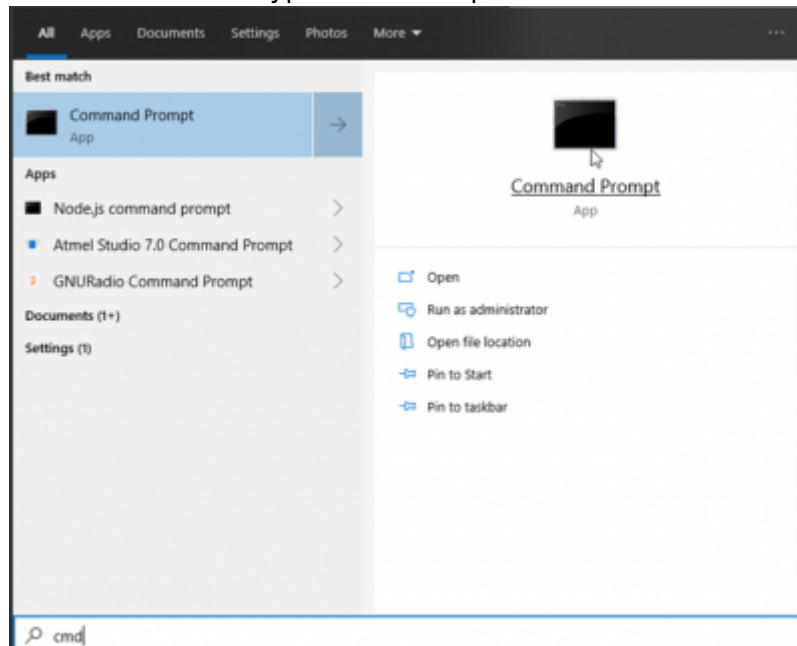
7. More than likely the subnet mask will populate automatically, however it should be 255.255.255.0

8. Leave the preferred and alternate DNS server options blank

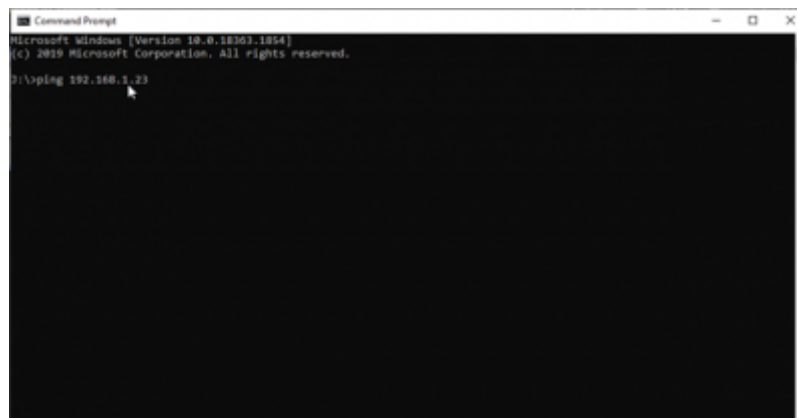
9. Click OK

## Communication Test - Pinging the AFR-500

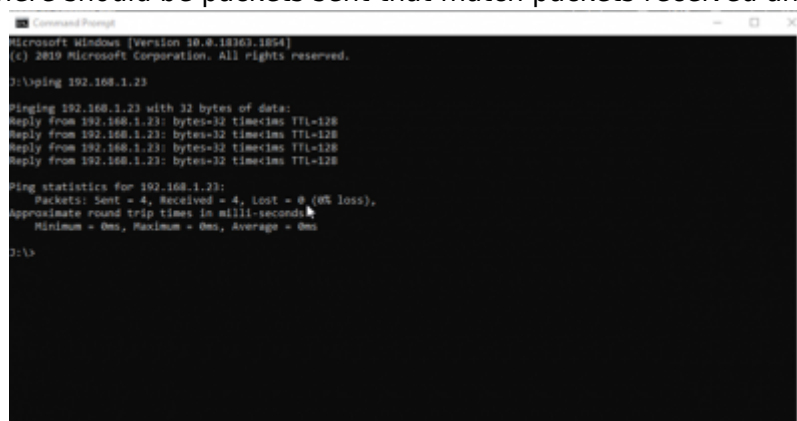
1. In windows go to the search bar and type “cmd” to open the command line window application



2. Type “ping 192.168.1.23” which is the IP address of our AFR-500



3. Press enter and there should be packets sent that match packets received and lost = 0



## Launching the AWI Application

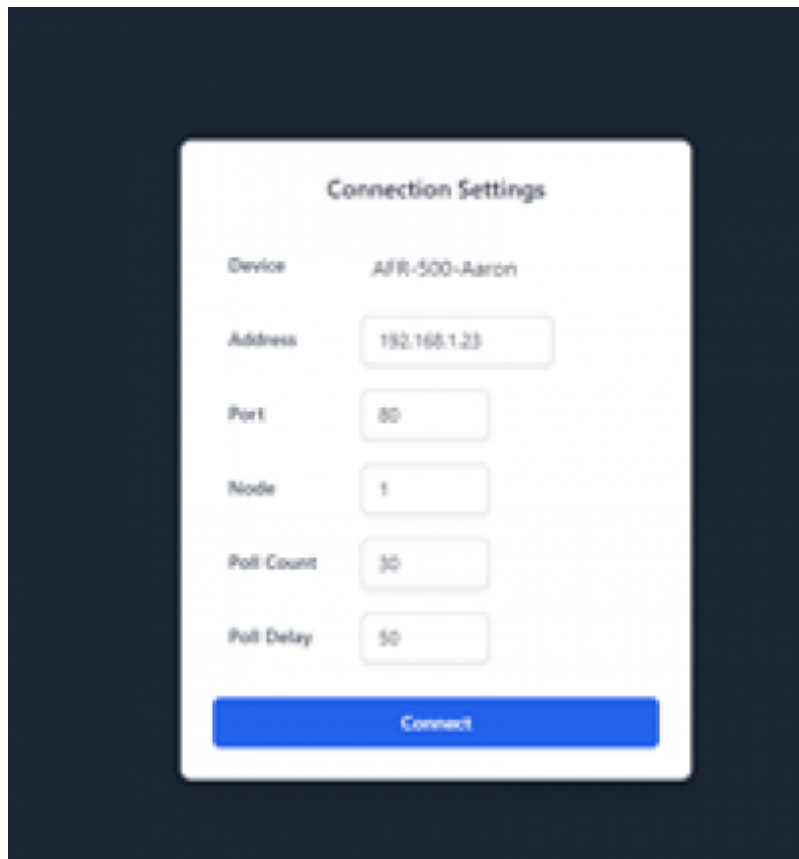
As previously discussed, there is a browser based user interface tool that now allows commissioning and interaction with Altronic products. All that is needed is the html file that can be found here: XXXXXXX and is called “AFR-500 Rev 0”

## Connection Parameters

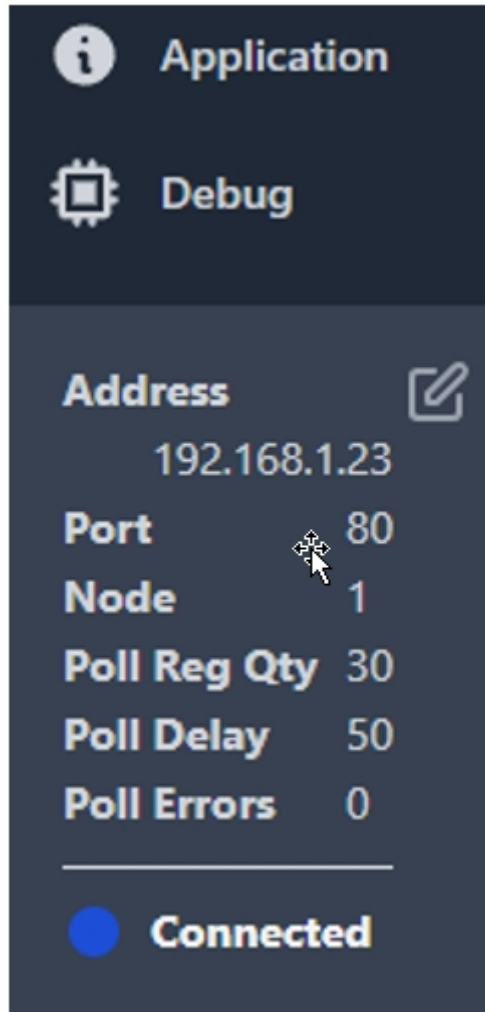
Upon launching the html file a prompt will ask for the connection settings. The device name should already be listed then the following settings need entered.

- Address - 192.168.1.23 (this is the IP address of the AFR-500)
- Port - 80
- Node - 1
- Poll count - 30
- Poll Delay - 50

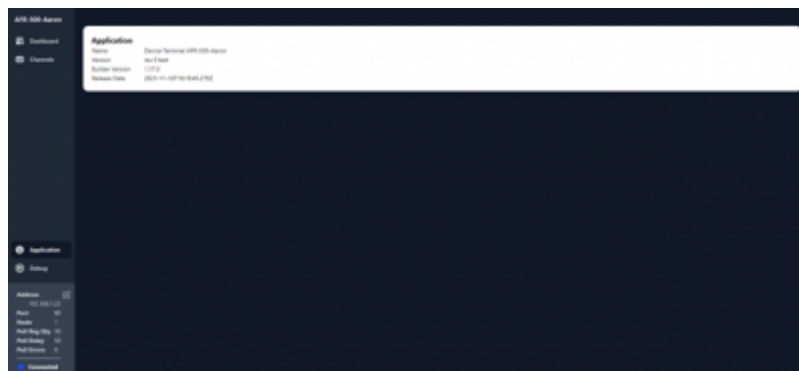
After entering these settings, press connect.

A screenshot of a web-based 'Connection Settings' dialog box. The dialog has a white background and is centered on a dark blue background. It contains the following fields: 'Device' with the value 'AFR-500-Aaron', 'Address' with '192.168.1.23', 'Port' with '80', 'Node' with '1', 'Poll Count' with '30', and 'Poll Delay' with '50'. Each field is a text input box. At the bottom of the dialog is a prominent blue button labeled 'Connect'.

After connecting, the AWI will be launched. A dashboard screen will be visible, and a menu and status bar will be available on the left side of the user's screen. At the bottom left corner, there will be connection details as shown below. As long as the status says connected and there is a blue light, then the system is communicating with the computer.



Available views are the dashboard, channels, application, and debug screens. Selecting the application view brings up the builder version that was used to build the dashboard, the name of the terminal window release, and its version information along with the date that it was built.



Selecting the debug screen brings up a list view of all available registers which also allows writing into a text field for applicable registers. Additionally, it provides information for the data type and whether the register is read only or read/write.

AFR-500-Aaron

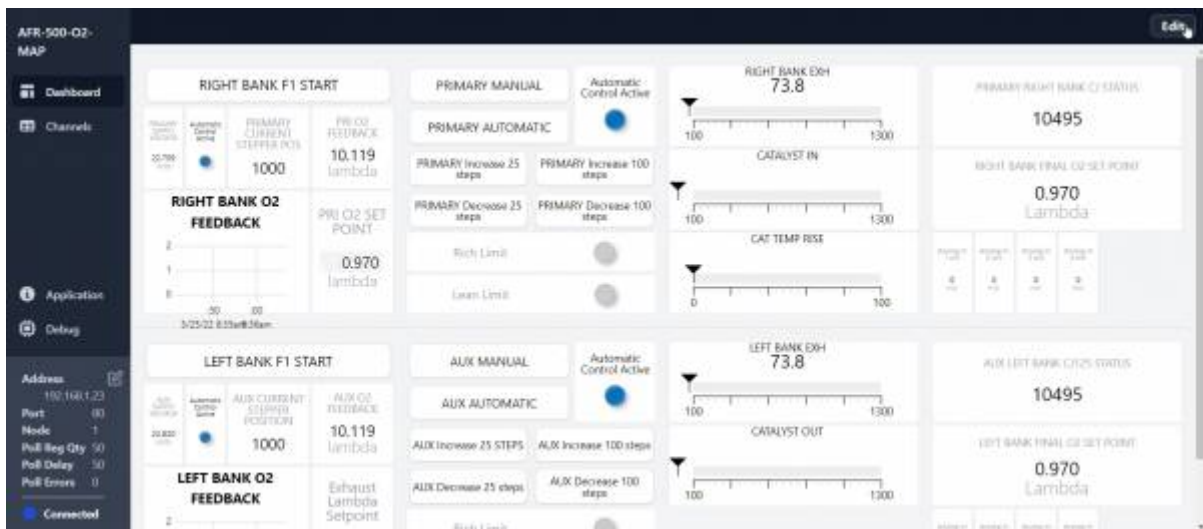
10 Function Code 175

Module Registers

Register	Label	value	write	value	Hex (int)	Hex (float)	ReadOnly / ReadWrite	Type	Config Export	Factor	offset	Display Decimals Places	Display Min	Display Max
100001	Idle position	1	1	1	1	1	Read Only	SOOL		1	0			
100002	New supply voltage	0	0	0	0	0	Read Only	SOOL		1	0			
100003	Current State	00F	0	0	0	0	Read Only	SOOL		1	0			
100004	Control Loop Mode	Open Loop	0	0	0	0	Read Only	SOOL		1	0			
100008	Automatic Control Active	Active	1	1	1	1	Read Only	SOOL		1	0			
100009	Getting Richer	0	0	0	0	0	Read Only	SOOL		1	0			
100010	Very Rich	0	0	0	0	0	Read Only	SOOL		1	0			
100011	Rich	0	0	0	0	0	Read Only	SOOL		1	0			
100012	ON TARGET	0	0	0	0	0	Read Only	SOOL		1	0			
100013	Lean	0	0	0	0	0	Read Only	SOOL		1	0			
100014	Very Lean	0	0	0	0	0	Read Only	SOOL		1	0			
100015	Getting Leaner	0	0	0	0	0	Read Only	SOOL		1	0			
100016	Lean Limit	Next Rich Limit	0	0	0	0	Read Only	SOOL		1	0			
100017	Rich Limit	Next Rich Limit	0	0	0	0	Read Only	SOOL		1	0			
100018	Shopper Resetting	Resetting Shopper	1	1	1	1	Read Only	SOOL		1	0			
100020	Catalyst In High Temperature Alarm	No Alarm	0	0	0	0	Read Only	SOOL		1	0			
100021	Catalyst Out High Temperature Alarm	No Alarm	0	0	0	0	Read Only	SOOL		1	0			
100022	Catalyst Delta High Temperature Alarm	No Alarm	0	0	0	0	Read Only	SOOL		1	0			
10001100	Discrete In 1	0	0	0	0	0	Read Only	SOOL		1	0			
10001101	Discrete In 2	0	0	0	0	0	Read Only	SOOL		1	0			
10001102	Discrete In 3	0	0	0	0	0	Read Only	SOOL		1	0			
10001103	Discrete In 4	0	0	0	0	0	Read Only	SOOL		1	0			
300001	Input 1 8-Bit Mirror	128	128	128	128	128	Read Only	UINT16		1	0			
300002	Input 2 8-Bit Mirror	1	1	1	1	1	Read Only	UINT16		1	0			
300003	Input 3 8-Bit Mirror	1	1	1	1	1	Read Only	UINT16		1	0			
300004	Input 4 8-Bit Mirror	1	1	1	1	1	Read Only	UINT16		1	0			
300005	Input 5 8-Bit Mirror	1	1	1	1	1	Read Only	UINT16		1	0			
300006	Input 6 8-Bit Mirror	1	1	1	1	1	Read Only	UINT16		1	0			
300007	Input 7 8-Bit Mirror	1	1	1	1	1	Read Only	UINT16		1	0			
300008	Input 8 8-Bit Mirror	1	1	1	1	1	Read Only	UINT16		1	0			
300009	SUPPLY INPUT VOLTAGE	1	1	1	1	1	Read Only	UINT16		1	0			
300010	Shopper Speed	0 rpm	0	0	0	0	Read Only	UINT16		1	0			

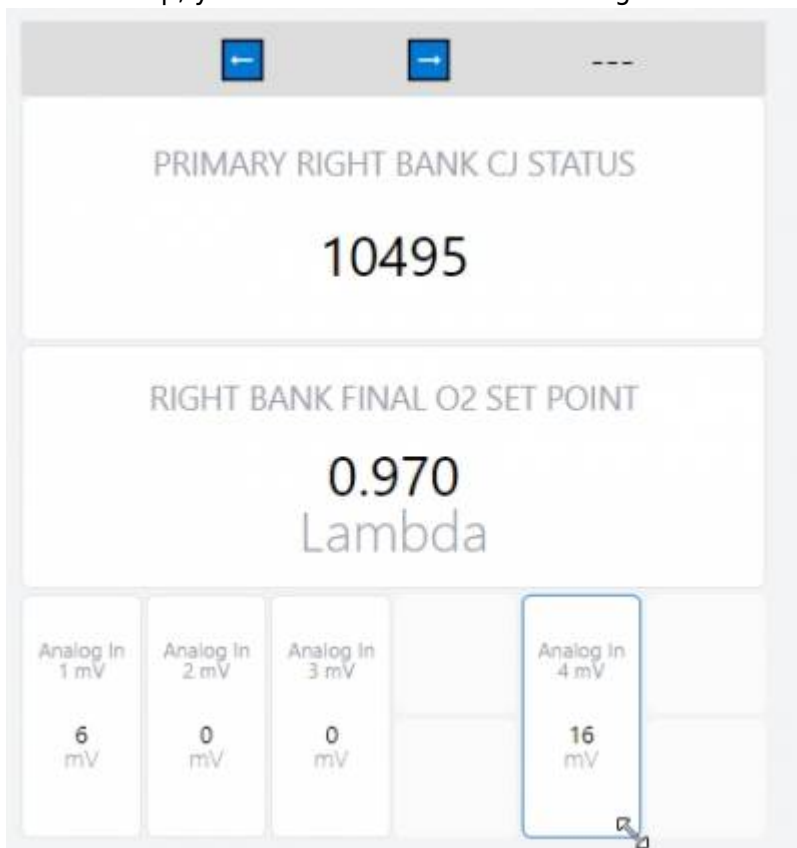
## 0.1 The Edit Button

The edit button allows the user to add, remove, change, and move elements on the dashboard page. The edit button is available on the dashboard page, but only on a non-locked (non-read only) device AWI (see application exporting options). Also, selecting the edit button allows for the options to import or export a dashboard.

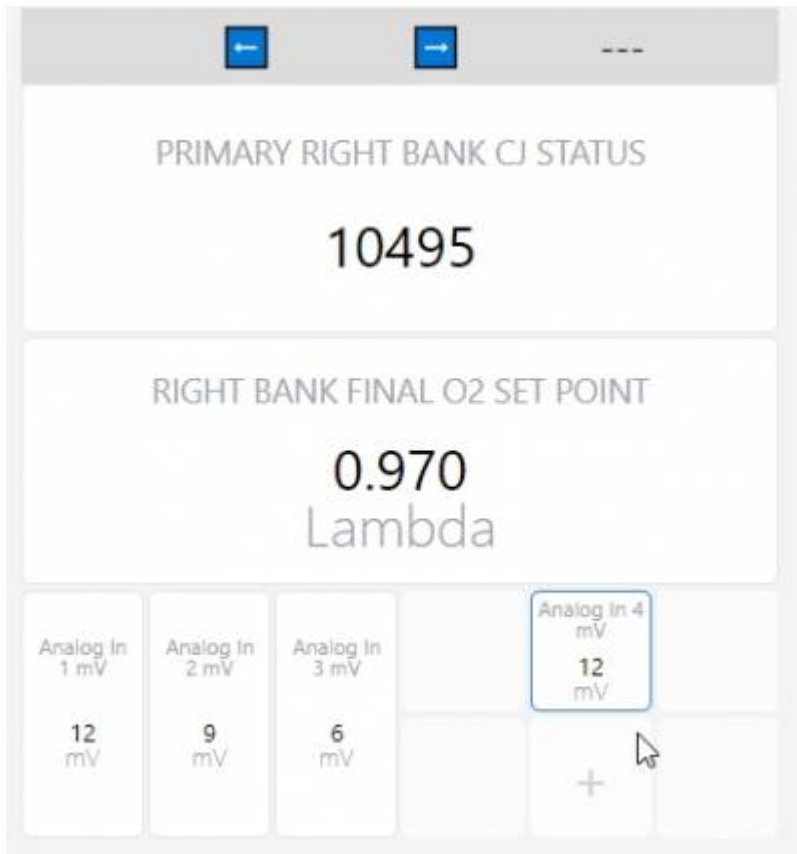




To resize an element on the dashboard, hover your mouse on the right hand corner of the element. If on a desktop, you should see the mouse change to an arrow as shown below.



Next, hold the left mouse button down and drag the mouse in the desired direction to resize the element. Let go of the mouse button to finalize the resizing.

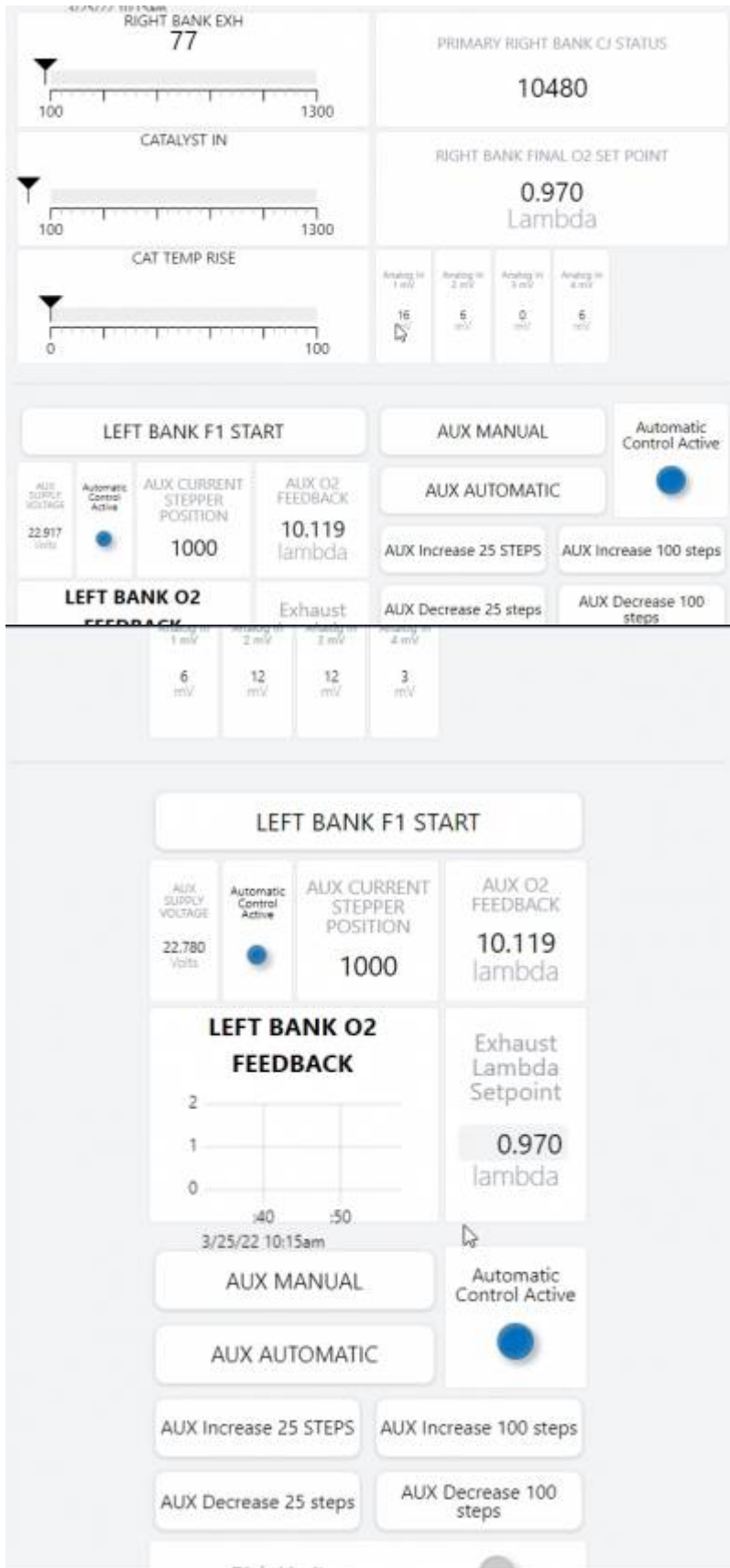


To delete an element, click on the element in edit mode and hit the delete key.

To move an element on the dashboard, left click in the middle of the element and drag the element to the desired location. Elements cannot be moved to another 6×6 grid.

Breakpoints are useful for keeping sections separated. For example, a breakpoint can be added to separate the left and right bank of a dashboard as in the AFR-500. A breakpoint is shown as a gray horizontal bar. When the user resizes the window, the leftmost grid below the breakpoint is always going to be the leftmost grid no matter how the window is resized. The grids after the leftmost grid will flow to the right until there is no more screen space, and then the next grid will be to the left and below.





To add a new breakpoint in the middle of two grids, click the 3 dashes and a new breakpoint will be inserted above the grid you selected. To add a new breakpoint at the end of the dashboard, add a new grid below the last breakpoint. This will add a new section, along with a breakpoint below the



new section.

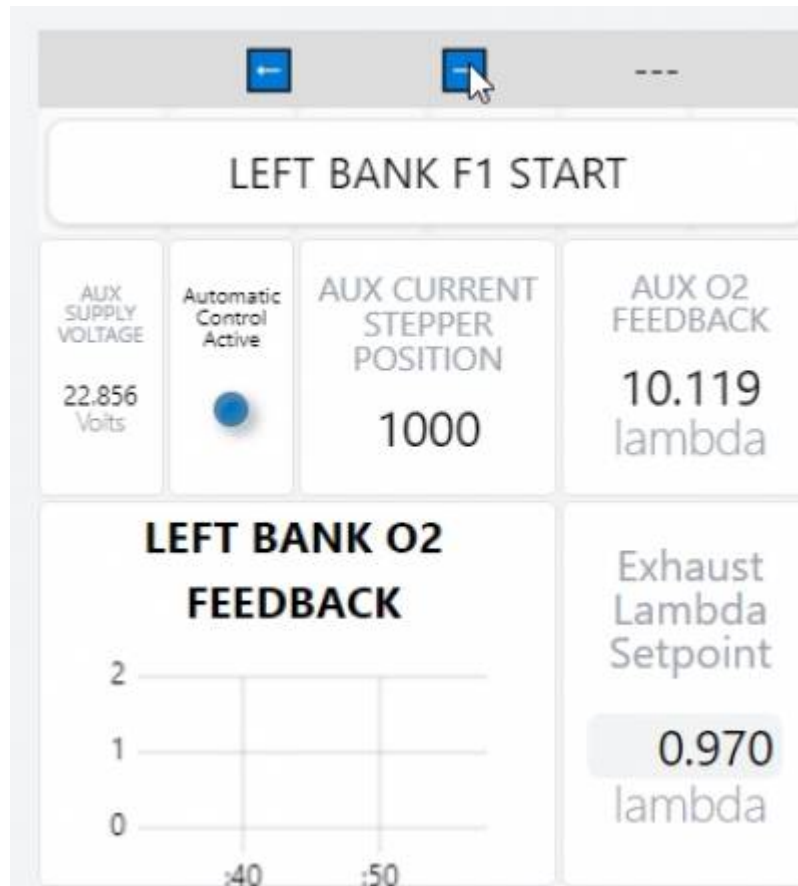
The “Label” text box allows for changing the name of the element that is shown on the dashboard. At first the label will be the register name as shown below.

A screenshot of a configuration form for a button element. It features a dropdown menu at the top with the text "[40000:81] F1 Start write 1". Below that is another dropdown menu labeled "Button". Underneath is a "Label:" text box containing the text "F1 Start write 1". At the bottom is a "Value:" text box containing the number "1".

After changing the label text, the new text will appear on the element. Below, a button is shown before and after changing the label.

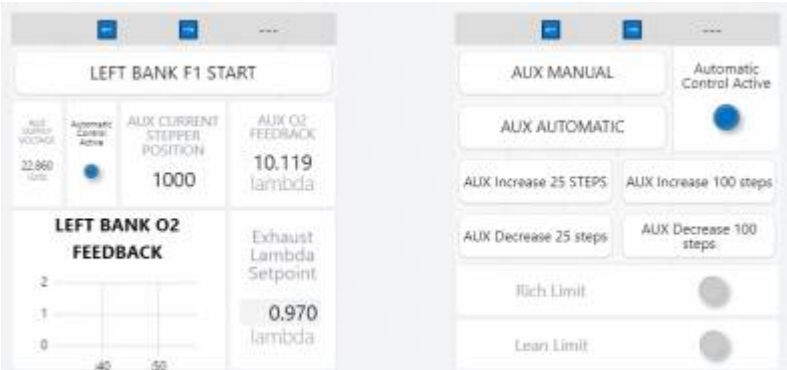
The image shows a configuration window for a button. At the top, there is a dropdown menu with the text "[40000:81] F1 Start write 1" and a downward arrow. Below this is another dropdown menu labeled "Button" with a downward arrow. Underneath, there is a "Label:" field containing the text "RIGHT BANK F1 START". Below the label field is a "Value:" field containing the number "1". At the bottom of the configuration window, there is a large, rounded rectangular button with the text "RIGHT BANK F1 START" centered on it.

Although it is not possible to move a dashboard element from one grid to another, it is possible to move a whole grid of dashboard elements. This is done by selecting the left or right arrows on the top



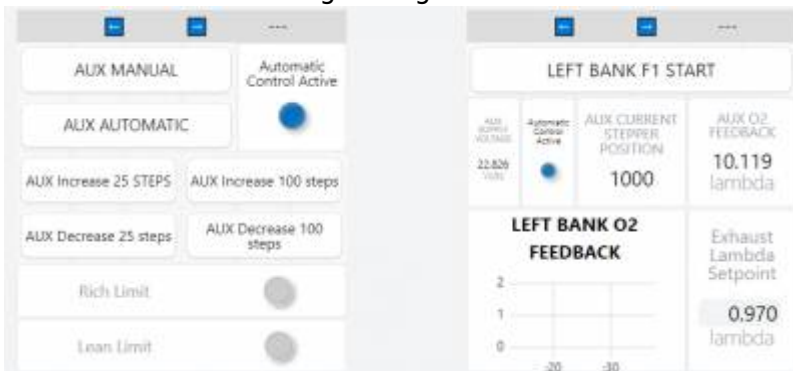
of the grid as shown below.

For example, when selecting the right arrow on the grid shown below, the grid is swapped with the



grid on the right.

The result after selecting the right arrow is shown below.



Grids can also be moved across the breakpoints, so it is possible to move a grid to a different section.

## 0.2 The Application Tab

The application tab allows for downloading the device AWI with three options along with a name, version, and release notes.

The first export option is locked (read-only) which makes the downloaded device AWI not editable. The edit button will not be available to make changes to the dashboard.

The second option for exporting is “Auto connect” which allows for the device AWI to skip the connect screen and go straight to the dashboard and use the connection settings that were selected before exporting the device AWI.

The third and final option is “Dashboard only” which will export the device AWI without the channel tab, application tab and debug tab available. The dashboard will be wider as a result of not having the additional tabs available.

After all options look correct, click the “Download” button and a .html file with the entered information and options will be downloaded. You can then, distribute or use this .html file as needed. The name, version, and release notes will be in the application tab of the downloaded .html file.

## 0.3 Setting up for DE-4000

Add the AFR-500 as an external device Import the modbus list into the external device configuration

Insert instructions for getting the JSON for the modbus map

When adding the external device you specify the IP address of the device (AFR-500) plus the node appended as a .X at the end of the ip address

Assigning the DE-4000 a secondary IP address that is in the same subnet as the AFR-500

Once the AFR-500 is available as an external device you drop the registers onto any dashboard page

Connect the ethernet cable

If using 485 you select the baud rate and the node.

From:  
<https://www.staging.altronic.a2hosted.com/> - **wiki STAGING !!!!!**

Permanent link:  
[https://www.staging.altronic.a2hosted.com/doku.php?id=documents:awi:awi\\_connection&rev=1648735177](https://www.staging.altronic.a2hosted.com/doku.php?id=documents:awi:awi_connection&rev=1648735177)

Last update: **2022/03/31 09:59**